

*Imagine...*

*Your front yard is Lake Winnipeg*

*Your backyard is a Provincial Park*

*Next door to a beautiful resort!*

*Make this your reality!*



**MISTY LAKE PRESENTS**

---

**GIMLI LAKE FRONT CONDOS**

**Gimli, Manitoba**

**For More Information:**

**Website: [www.mistylake.com](http://www.mistylake.com) email: [rob@corporatehotels.ca](mailto:rob@corporatehotels.ca) Telephone: 204-793-3484**

# Feature Sheet



## MISTY LAKE PRESENTS

### GIMLI LAKE FRONT CONDOS

Gimli, Manitoba



#### ***Building and Grounds***

- 🏡 Located next to Camp Morton Provincial Park with over 124km of hiking and cross country ski trails.
- 🏡 Miles of sandy beach
- 🏡 Close to five golf courses
- 🏡 Concrete, steel and masonry construction
- 🏡 Maximized sound proofing
- 🏡 Affordable condo fees
- 🏡 Security building entrance
- 🏡 Mail delivery on-site
- 🏡 Elevator
- 🏡 Visitor parking
- 🏡 Includes one heated, indoor parking stall

#### ***Individual Units***

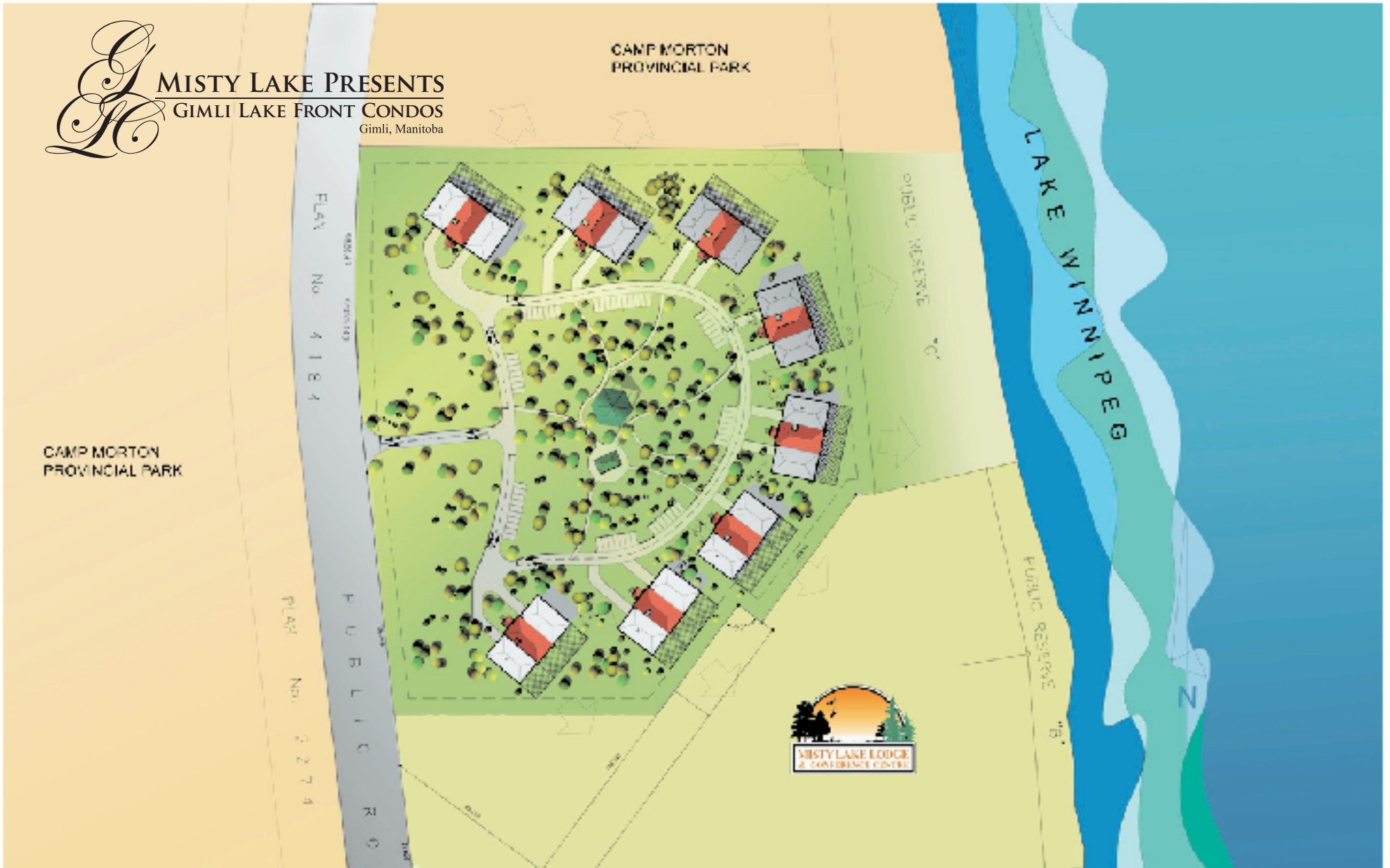
- 🏡 In-suite laundry room
- 🏡 Garburator
- 🏡 Fridge, stove, range hood and dishwasher
- 🏡 Private temperature controls (heat & central air)
- 🏡 Pre-wired for cable and internet
- 🏡 Double stainless steel sink
- 🏡 Walk-in pantry
- 🏡 Concrete patios (*Barbeques allowed*)
- 🏡 Two baths: Ensuite – 5ft two seat shower  
Main bath – 5ft tub/shower
- 🏡 Over-sized windows to enjoy the view
- 🏡 Large walk-in closet in master bedroom

*\*Specifications subject to change without notice.*

# Site Plan



MISTY LAKE PRESENTS  
GIMLI LAKE FRONT CONDOS  
Gimli, Manitoba



**The Concorde**  
(1180 sq. ft.)

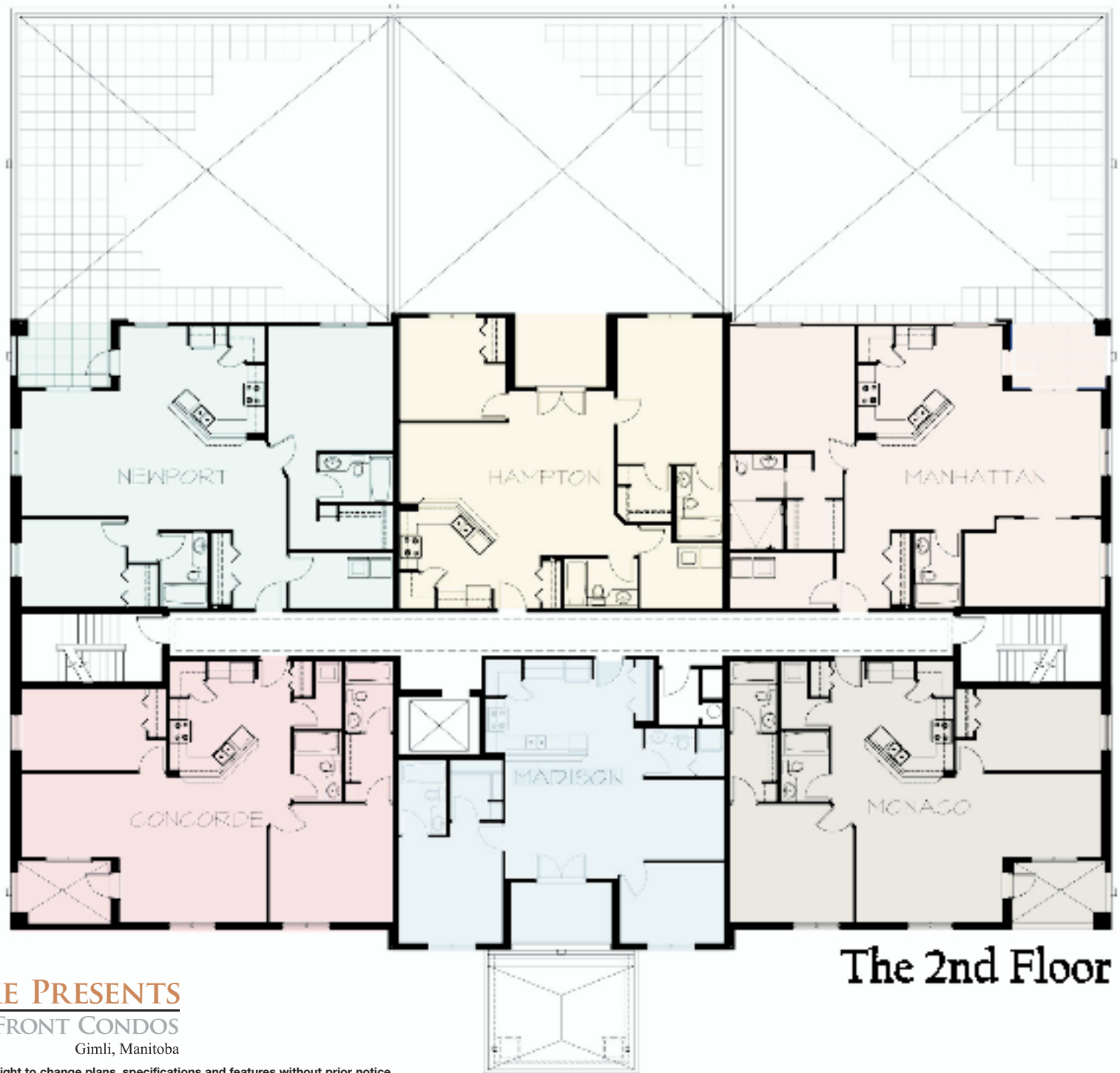
**The Madison**  
(959 sq. ft.)

**The Monaco**  
(1180 sq. ft.)

**The Newport**  
(1320 sq. ft.)

**The Hampton**  
(1146 sq. ft.)

**The Manhattan**  
(1320 sq. ft.)



**The 2nd Floor**



**MISTY LAKE PRESENTS**

**GIMLI LAKE FRONT CONDOS**

Gimli, Manitoba

The Vendor reserves the right to change plans, specifications and features without prior notice.  
Square footage measurements are based on architectural plans at time of printing.  
Actual useable floor space may vary from the stated floor area.

The Concorde  
(1180 sq. ft.)

The Madison  
(959 sq. ft.)

The Monaco  
(1180 sq. ft.)

The Newport  
(1320 sq. ft.)

The Hampton  
(1146 sq. ft.)

The Manhattan  
(1320 sq. ft.)



The 3rd-5th Floor



**MISTY LAKE PRESENTS**

GIMLI LAKE FRONT CONDOS

Gimli, Manitoba

The Vendor reserves the right to change plans, specifications and features without prior notice.  
Square footage measurements are based on architectural plans at time of printing.  
Actual useable floor space may vary from the stated floor area.

The Palms  
(1128 sq. ft.)

The Madison  
(959 sq. ft.)

The Monaco  
(1180 sq. ft.)

The Newport  
(1320 sq. ft.)

The Hampton  
(1146 sq. ft.)

The Manhattan  
(1320 sq. ft.)



The 6th Floor



**MISTY LAKE PRESENTS**

GIMLI LAKE FRONT CONDOS

Gimli, Manitoba

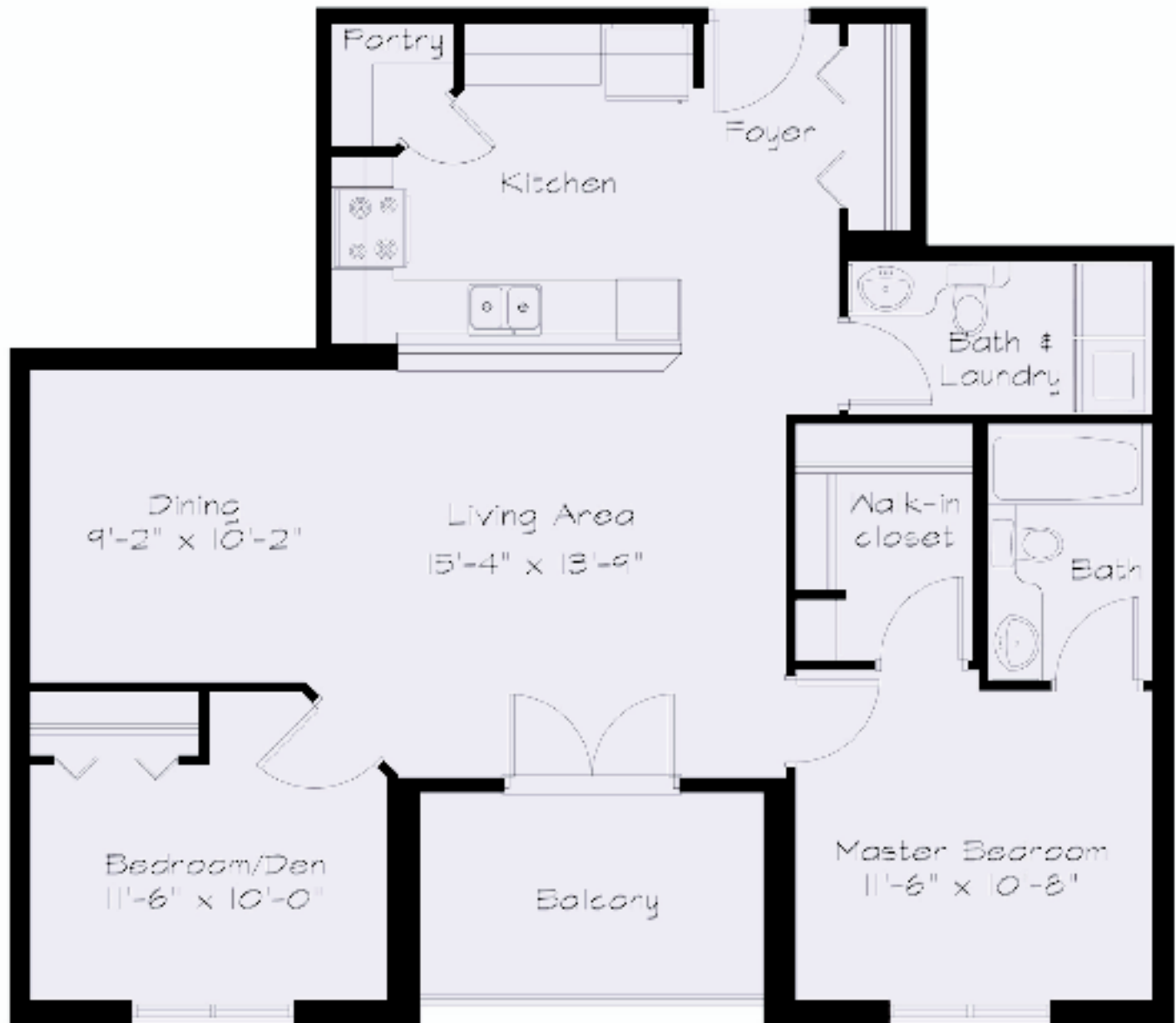
The Vendor reserves the right to change plans, specifications and features without prior notice.  
Square footage measurements are based on architectural plans at time of printing.  
Actual useable floor space may vary from the stated floor area.



**MISTY LAKE PRESENTS**  
**GIMLI LAKE FRONT CONDOS**  
 Gimli, Manitoba

The Vendor reserves the right to change plans, specifications and features without prior notice.  
 Square footage measurements are based on architectural plans at time of printing.  
 Actual useable floor space may vary from the stated floor area.

**The Concorde**  
**(1180 sq. ft.)**

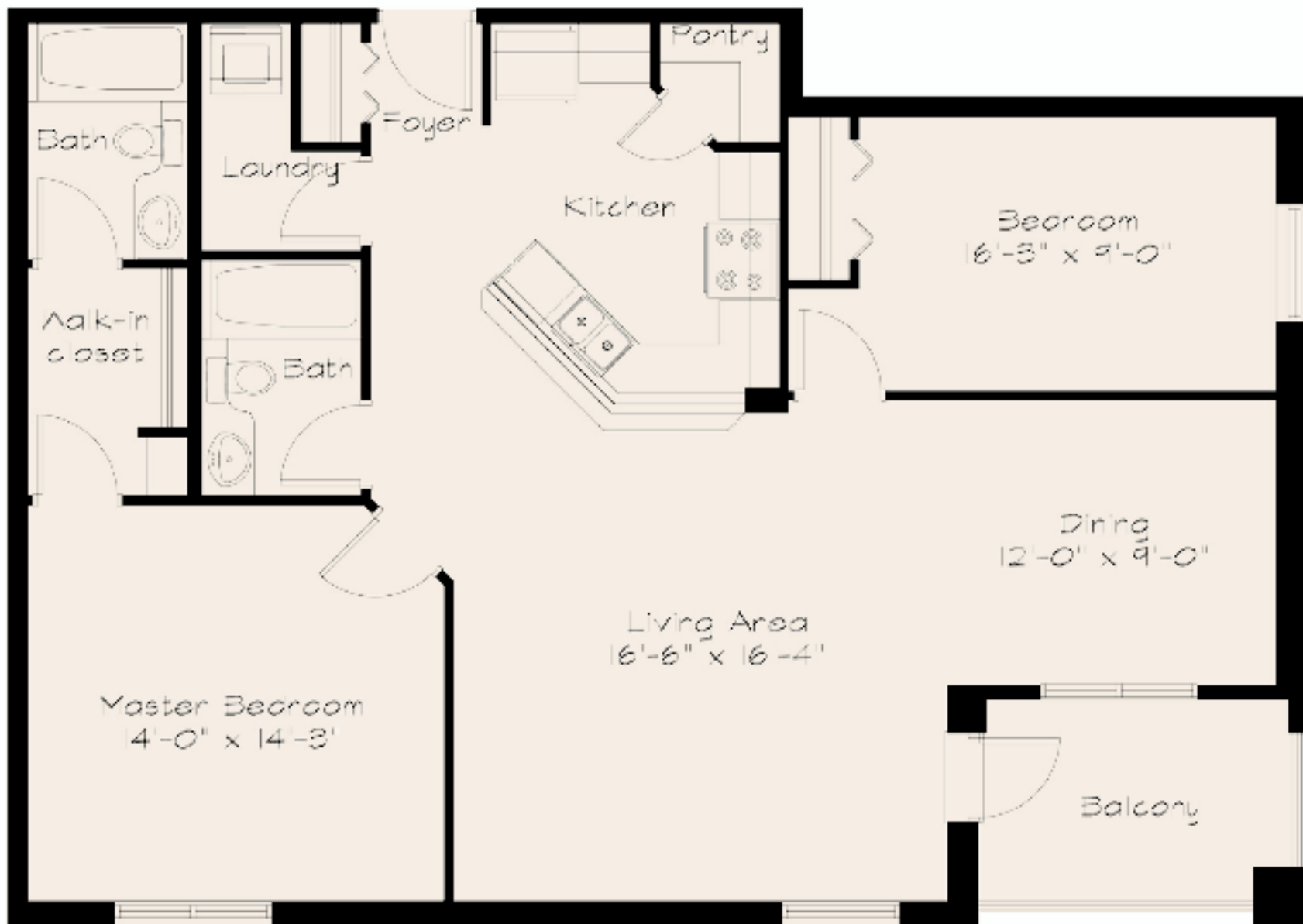


**The Madison  
(959 sq. ft.)**



**MISTY LAKE PRESENTS**  
**GIMLI LAKE FRONT CONDOS**  
 Gimli, Manitoba

The Vendor reserves the right to change plans, specifications and features without prior notice.  
 Square footage measurements are based on architectural plans at time of printing.  
 Actual useable floor space may vary from the stated floor area.



**The Monaco  
(1180 sq. ft.)**



**MISTY LAKE PRESENTS**

GIMLI LAKE FRONT CONDOS

Gimli, Manitoba

The Vendor reserves the right to change plans, specifications and features without prior notice.  
 Square footage measurements are based on architectural plans at time of printing.  
 Actual useable floor space may vary from the stated floor area.



## The Newport (1320 sq. ft.)

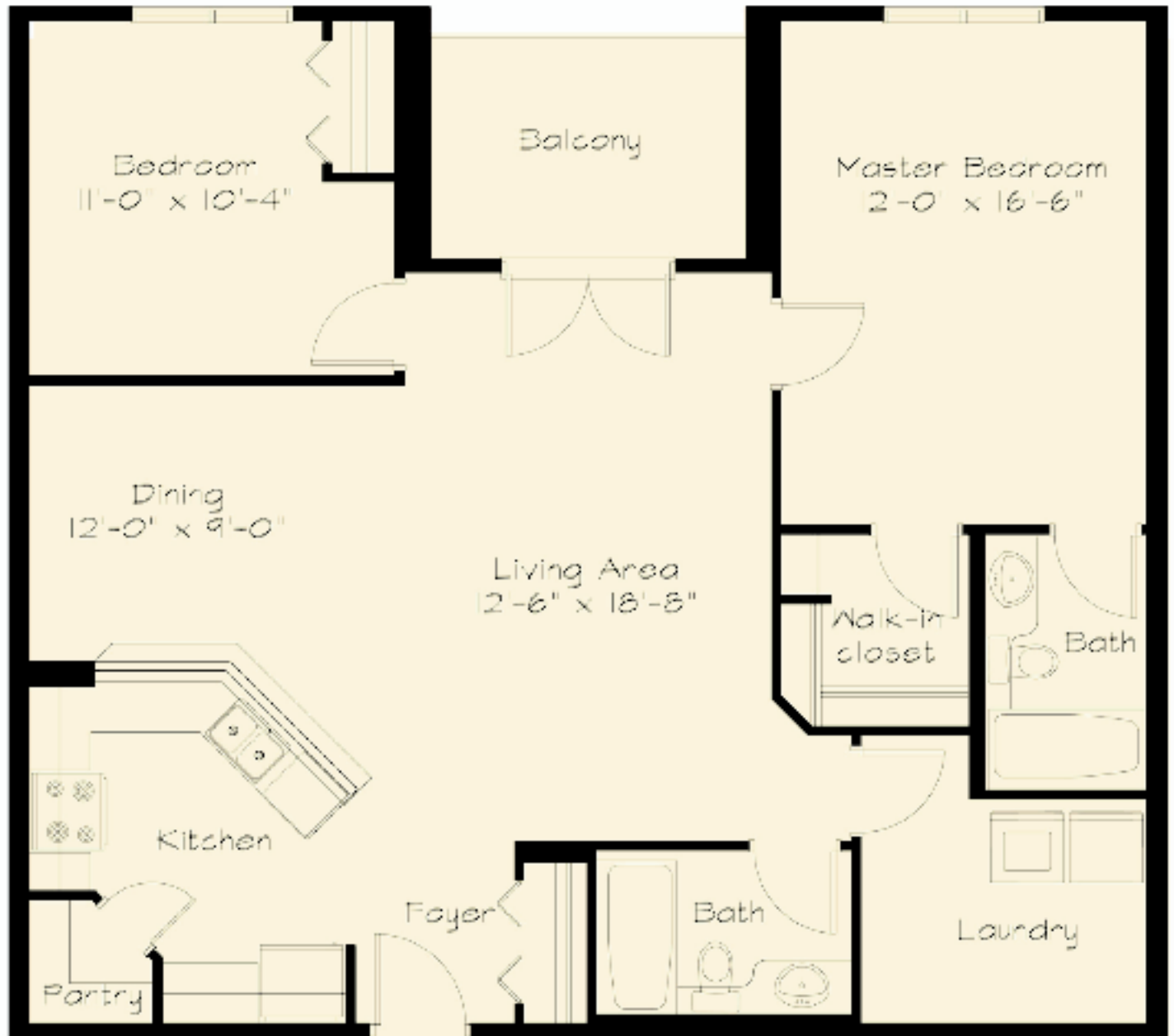


**MISTY LAKE PRESENTS**

GIMLI LAKE FRONT CONDOS

Gimli, Manitoba

The Vendor reserves the right to change plans, specifications and features without prior notice.  
 Square footage measurements are based on architectural plans at time of printing.  
 Actual useable floor space may vary from the stated floor area.

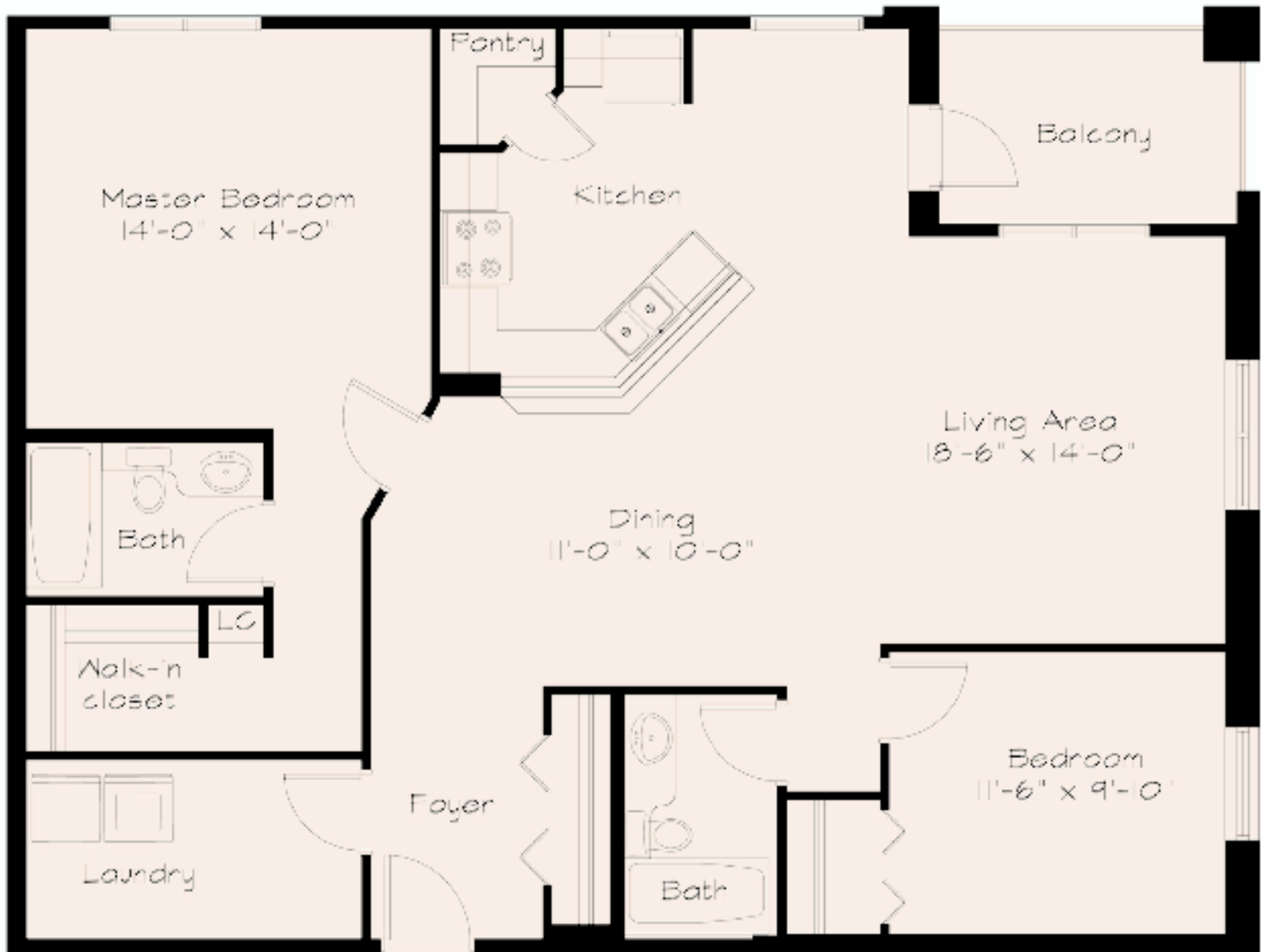


**The Hampton**  
**(1146 sq. ft.)**



**MISTY LAKE PRESENTS**  
GIMLI LAKE FRONT CONDOS  
Gimli, Manitoba

The Vendor reserves the right to change plans, specifications and features without prior notice.  
Square footage measurements are based on architectural plans at time of printing.  
Actual useable floor space may vary from the stated floor area.



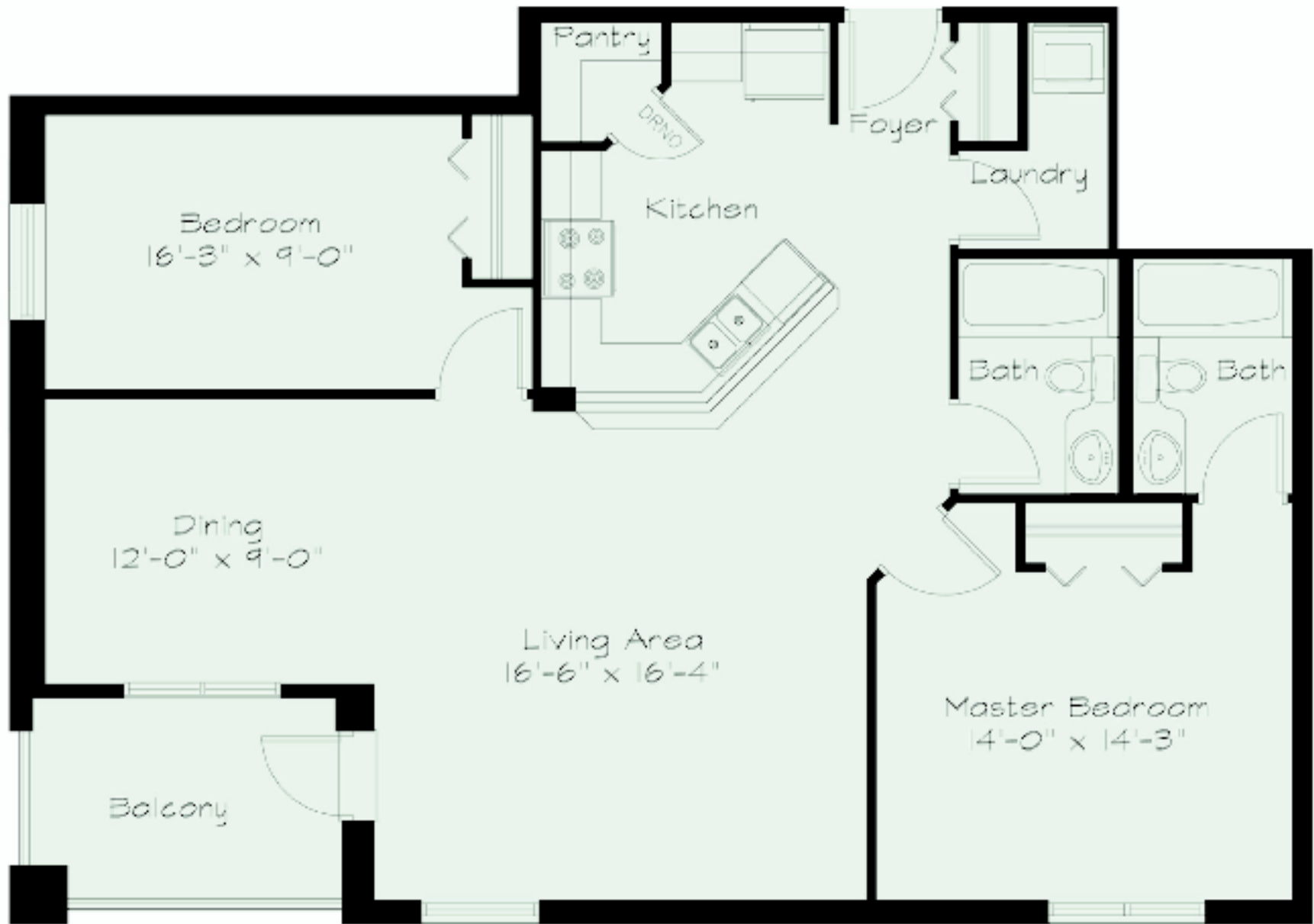
**MISTY LAKE PRESENTS**

GIMLI LAKE FRONT CONDOS

Gimli, Manitoba

The Vendor reserves the right to change plans, specifications and features without prior notice. Square footage measurements are based on architectural plans at time of printing. Actual useable floor space may vary from the stated floor area.

**The Manhattan  
(1320 sq. ft.)**

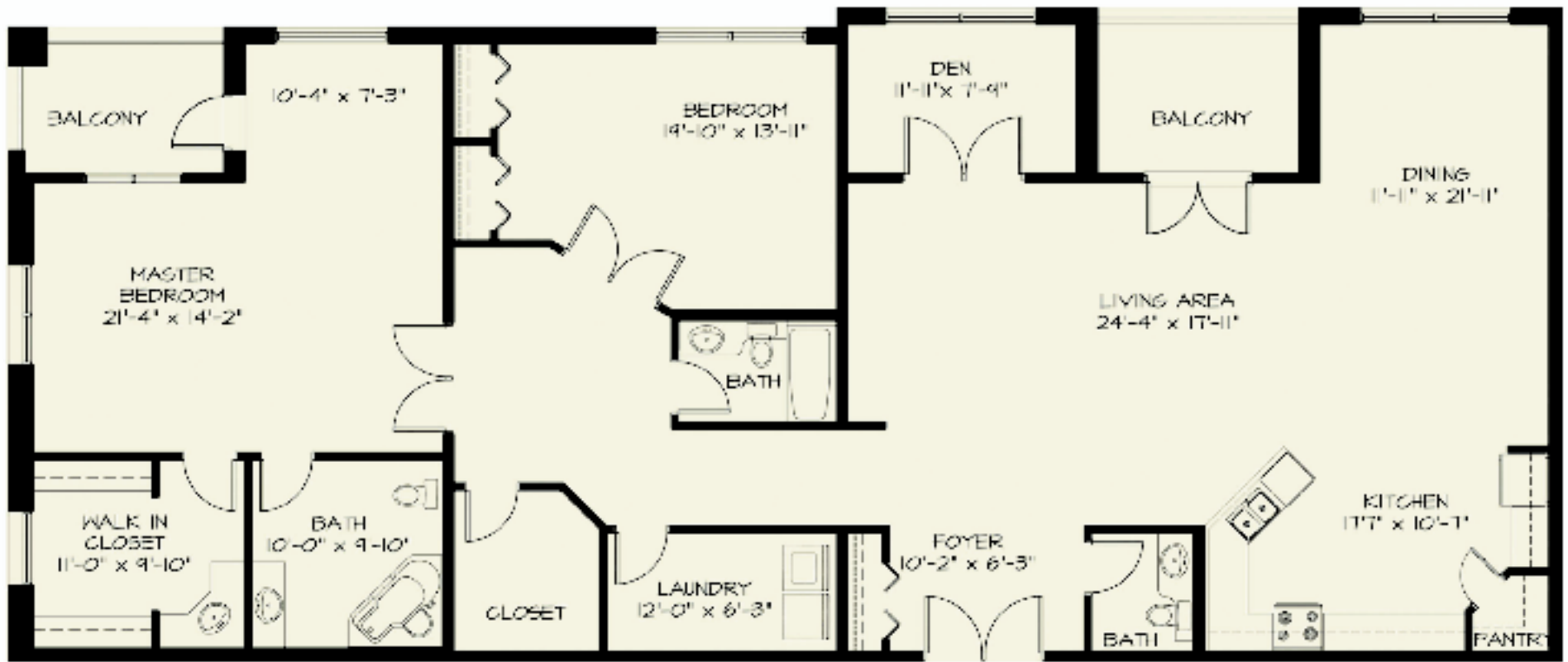


**The Palms  
(1128 sq. ft.)**



**MISTY LAKE PRESENTS**  
**GIMLI LAKE FRONT CONDOS**  
 Gimli, Manitoba

The Vendor reserves the right to change plans, specifications and features without prior notice.  
 Square footage measurements are based on architectural plans at time of printing.  
 Actual useable floor space may vary from the stated floor area.



**The Summit  
(2474 sq. ft.)**



**MISTY LAKE PRESENTS**

**GIMLI LAKE FRONT CONDOS**

Gimli, Manitoba

The Vendor reserves the right to change plans, specifications and features without prior notice.  
 Square footage measurements are based on architectural plans at time of printing.  
 Actual useable floor space may vary from the stated floor area.